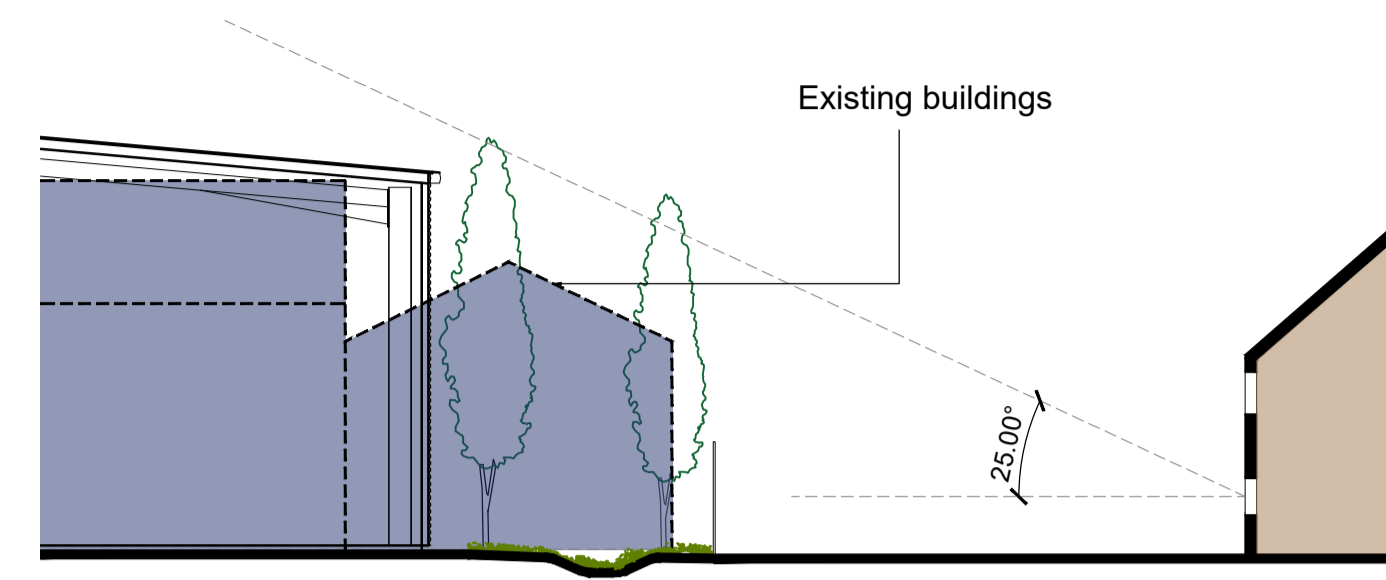
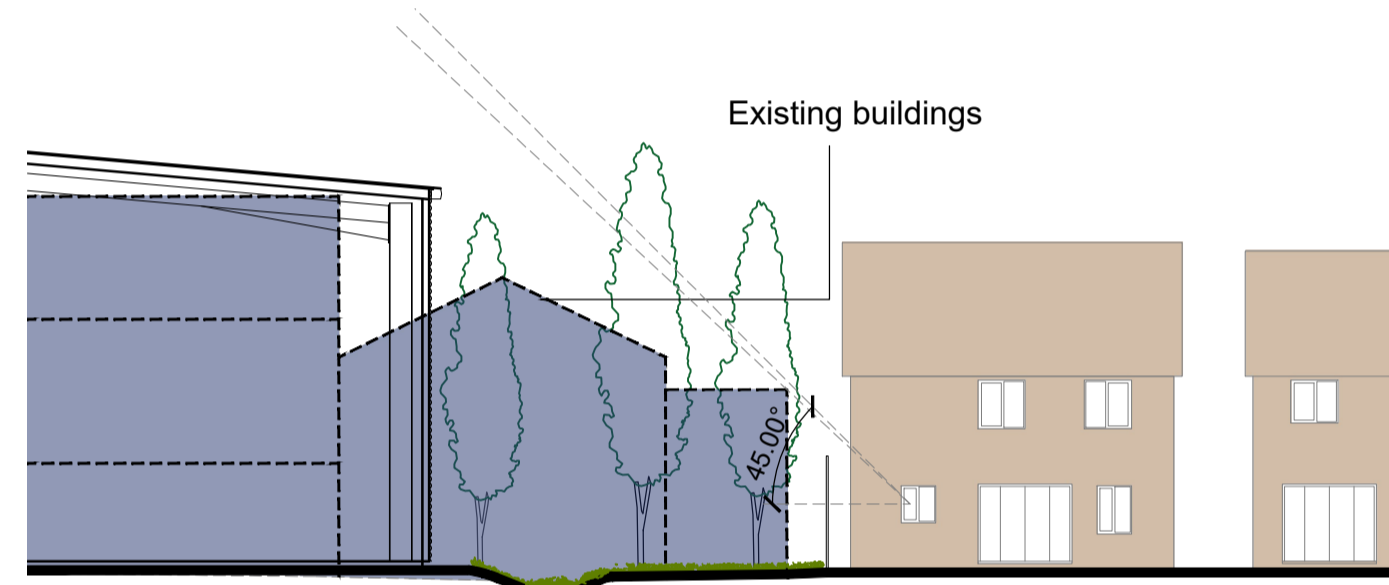


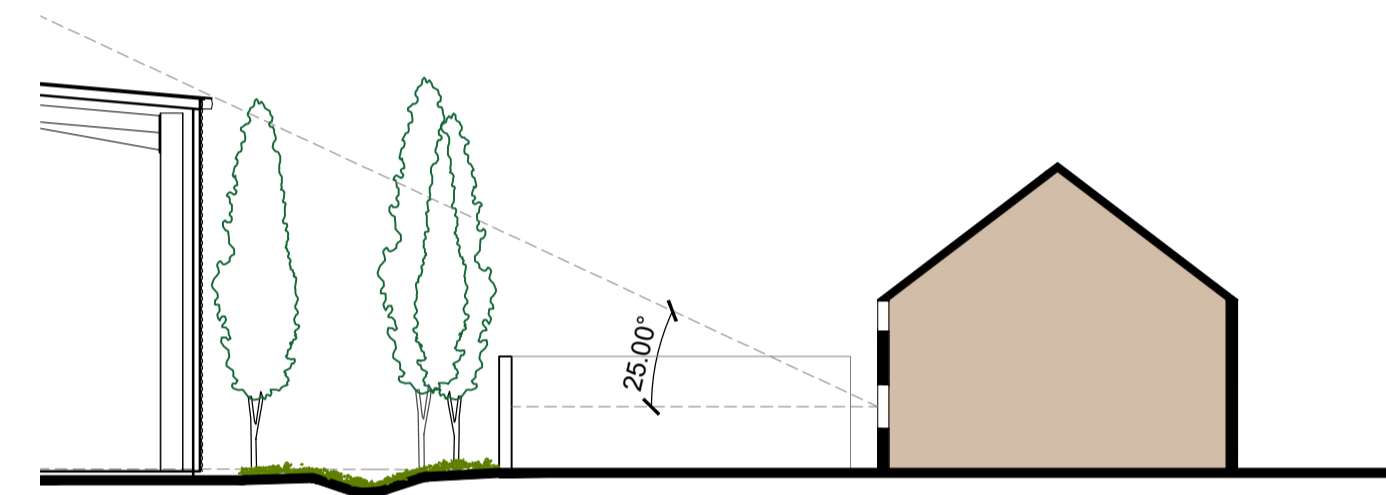
SECTION A



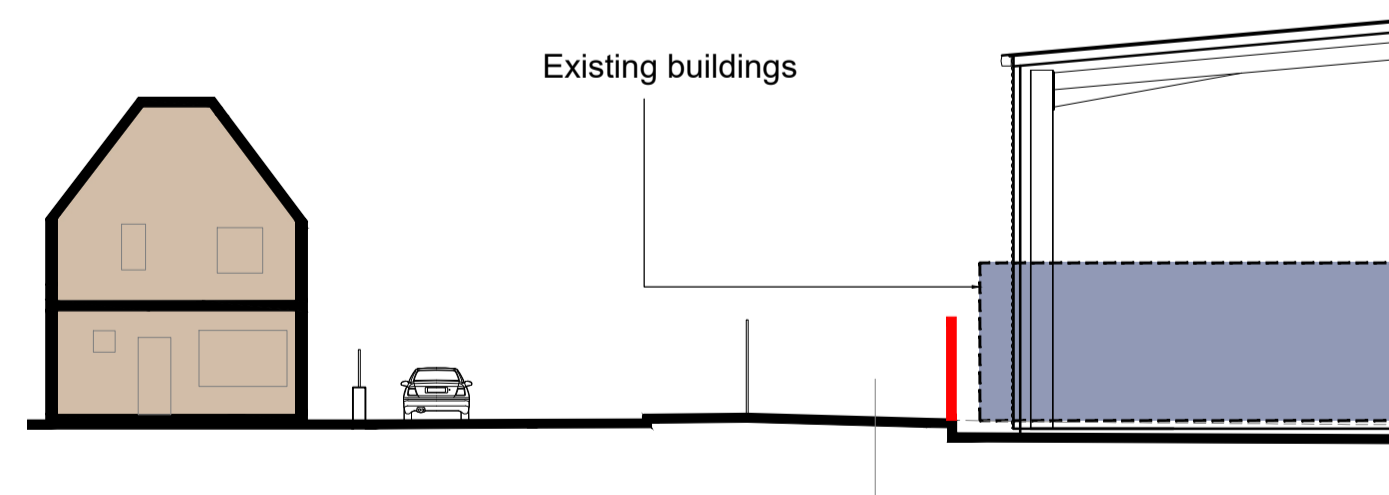
SECTION B



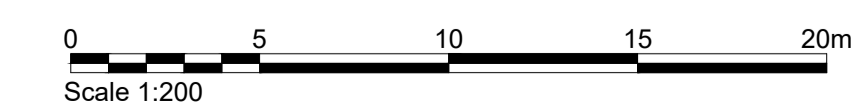
SECTION C



SECTION D



SECTION E



Client:  
GOYA DEVELOPMENTS



Project:  
HEADLEY ROAD EAST  
WOODLEY

12 Warren Yard,  
Warren Park,  
Milton Keynes,  
MK12 5HW  
01908 305 246

info@prc-group.com  
www.prc-group.com

Drawing Title:  
DETAILED SITE SECTIONS

Scale @ A1: 1:200  
Checked by: JR  
Date: SEPT 21

Job No: 11359  
Stage: PL 106  
Drawing No: PL 106  
Rev:

Issue Status:  
Construction  Preliminary   
Information  Approval   
Tender

**Architecture**  
Planning  
Master Planning  
Urban Design  
Interiors  
Landscape

**Offices**  
Woking  
London  
Milton Keynes  
Warsaw

This page is intentionally left blank